

Vascular flora analysis in the Southern part of Chott El Hodna wetland (Algeria)

¹Abdelghani Zedam, ²Mohamed Fenni

¹ Department of Agricultural Sciences, University of M'Sila, M'Sila, Algeria;

² Department of Agricultural Sciences, University of Setif1, Setif, Algeria.

Corresponding author: A. Zedam, habzedam@gmail.com/zedamg@univ-msila.dz

Abstract. The southern part of Chott El Hodna (M'Sila province - Algeria) wetland belongs to mediterranean arid bioclimatic stage with mild winter. During the period 2009-2013, an inventory of the natural vegetation took place in this area where 79 floristic samples were conducted along two transects from north to south and from east to west. We found 116 species, distributed in 85 genera belonging to 29 botanical families. The Magnoliopsida have 27 families and 68 genera and the Liliopsida have only 02 families and 17 genera. There are six families whose are best represented by 65.52% of the total flora (Poaceae, Asteraceae, Fabaceae, Chenopodiaceae, Brassicaceae and Caryophyllaceae). This flora contains 20 endemic taxa including 8 rare species. It has the following biological spectrum: annuals (therophytes): 60.34% and perennials: 36.66% (chamaephytes: 18.10%, hemicryptophytes: 11.20%, phanerophytes: 6.03% and geophytes: 4.31%). This is a characteristic of arid habitats. The numerical analysis of vegetation by using the Sørensen's similarity index and the Detrended Correspondence Analysis (DCA) resulted in the individualization of three major groups of samples that reflect different environmental conditions and specific enough of the study area. The vegetation appeared much adapted to the environment. The preservation of this habitat and flora must register in emergency concerns.

Key Words: vascular flora analysis, endemic species, Chott El Hodna wetland, similarity, DCA, Algeria.

Introduction. The natural components of the ecosystem are defined as the physical, biological or chemical, such as the environment, water, flora, fauna, nutrients and the interactions that exist between them (Davis 1996). The flora of a geographical area is the most important biotic component (Ozenda 1982). It is an expression of ecological conditions there. Myers (1990) and Médail & Quézel (1999) show that the Mediterranean region, including our study area, is one of the world's major centers of plant diversity, where 10% of higher plants can be found in only 1.6% of the Earth's surface. Similarly, Myers et al (2000) consider that the Mediterranean countries hold almost 4.5% of the world's endemic flora.

The studied area is part of the great watershed Hodna (Hadjab 1998; Le Houerou 2009). This is an athalassic salt lake. It is formed by a sebkha and a Chott. Sebkha is the central area dominated by water and devoid of vegetation due to high salt concentrations. Chott is the surrounding area which forms a ring of vegetation around water. This vegetation is steppic and mainly composed of salt-tolerant, perennial and succulent species (Kaabeche et al 1995). Chotts and sebkhas have a seasonal water regime. They dry up in summer and are re-flooded by water in winter.

The vascular flora of the southern part of this wetland is a part of the steppe vegetation of the Hodna (Le Houerou 1995). According to Kaabeche (1990) this area, from the biogeographic belonging, is a Mediterranean region with two sub-regions of Eu-Mediterranean (Maghreb-Mediterranean and Mediterranean-steppic areas) and Sahara-Arabian (Sahara-Mediterranean area).

The plant richness is due to the geomorphological diversity of the region and has resulted in a wide range of local climates (Médail & Myers 2004).

This heritage is currently under threat of degradation due to a combination of several natural factors (especially recurrent droughts and arid climate) and

anthropogenic activities including overgrazing and land clearing. This regressive dynamic situation of the natural vegetation has prompted us to take stock of what exists in order to decide on the future floristic's degradation or loss which may occur in that particular area for the preservation of the flora. Management and conservation of natural environments and especially wetlands of international importance implies knowledge of flora and especially those endemics or rare those reflect the importance of the local or regional biodiversity. The precise knowledge of the vegetation of a region is the essential foundation and starting point for any attempt to conservation (Quézel 1991). The inventory and analysis of the natural vascular plant of our study area is necessary to know the overall composition of existing taxa, flora diversity and chorology species because this area is belonging to a wetland that has an international importance and must be preserved.

Material and Method

Study area. Chott El Hodna is situated in northeastern Algeria (Figure 1). It is one of the largest Chotts of Algeria with an area of 362,000 ha (DGF 2002). It is a wetland of international importance under the Ramsar Convention. It was classified such as in 2001 (DGF 2002). According to Emberger (1955) in Le Houerou (1995) and depending on weather data from the meteorological station of Boussaada (459 m alt., 35°20' lat. N & 04°12' long. E), the south of Chott El Hodna is located in a mediterranean arid bioclimatic stage with mild winter ($Q_2 = 18.43$, $m = 4.3^\circ\text{C}$, $M = 39.4^\circ\text{C}$, $P = 190.9$ mm and seasonal rainfall regime is Autumn-Spring-Winter-Summer). Geologically, the study area contains deposits of alluviums of the Quaternary. It is a part of a semidesert sandy region with the presence of sand dunes (Mimoune 1995).

Our study area in the southern part of Chott El Hodna wetland present two environments: the first is the M'Cif wadi and the second is the Chott near the sebkha area.

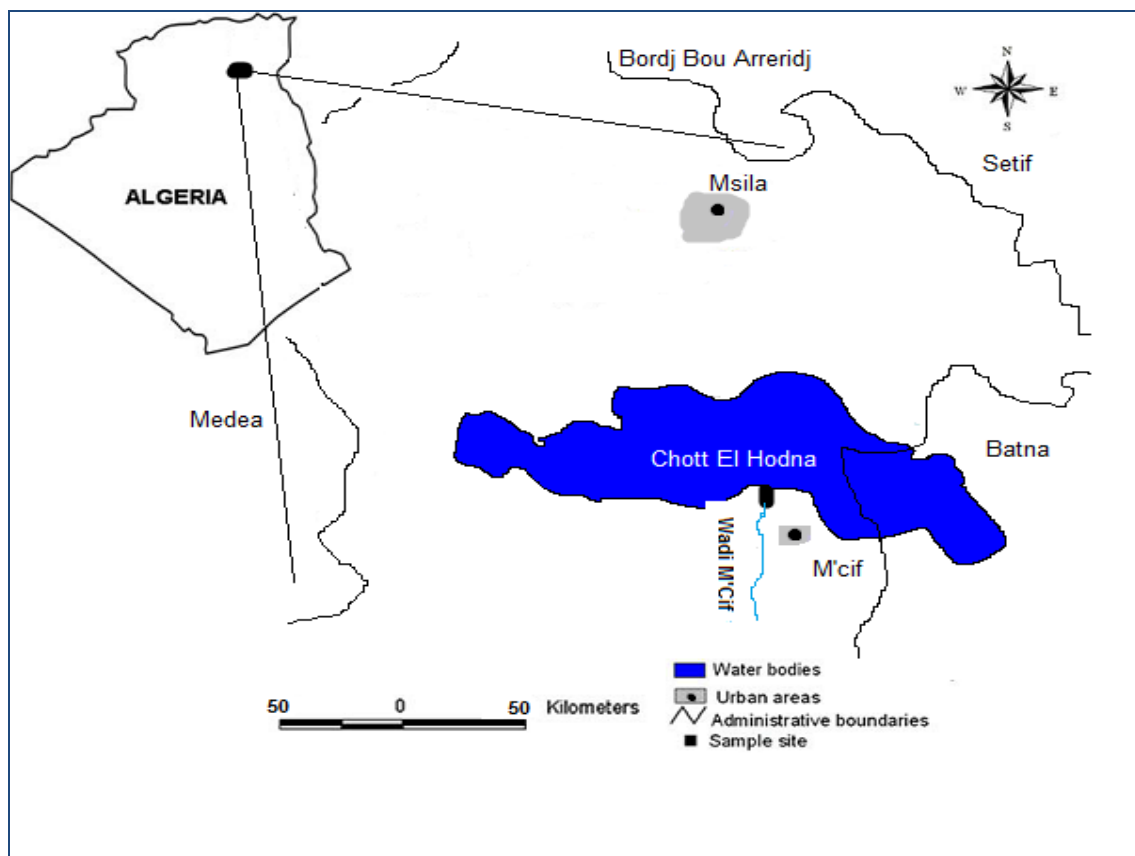


Figure 1. Location of study area (Original drawing)

Sampling and data analysis. We conducted a non-probability systematic sampling in a repetitive mode represented by online sections crossing the existing vegetation belts in two different sites: wadi and Chott.

The first site of the North-South transect, concerns the banks of the M'Cif wadi: East Bank and West Bank. The second East-West transect site concerns the Chott in its southern part of Chott El Hodna.

The distances between the floristic samples are irregular. They range from 100 to 180 m along the lines of the abovementioned directions.

Between 2009 and 2013 and during Springs seasons, floristic samples were conducted according to the method of minimum area (Hammada 2007). This area is that of the floristic sample (Hamel et al 2013). This is the Braun-Blanquet method (Guinochet 1973). It involves the taking of all plant species in a well-defined surface and where each species was assigned by a semi-quantitative coefficient: abundance-dominance (Gillet 2000). The minimum area expresses the necessary and sufficient surface for a floristic sample (Lacoste & Salanon 2005). Colin (1970 in Frontier 1983) defined the sample (floristic releve) as a fragment taken to judge the whole because it contains almost all of the species that can be found in the study fragment. The surface of the floristic sample depends on climatic and stationary conditions. The number of annuals (therophytes) also depends of these same conditions (Djebaili 1984). In the steppe communities several researchers used: Djebaili (1978) 100m², Kaabeche (1990) 16m², Ayad et al (2013) 16 to 20m² and Bouabdallah (1992) 16-256m². For our part this surface varies from 20 to 70m². It should be noted that it is rarely possible to identify all individuals in a community (Magurran 1988).

The collected samples were identified and determined by the use of: Newflora of Algeria and southerly desert regions: Quézel & Santa (1962, 1963) and Sahara Flora: Ozenda (1983). The taxa nomenclature used is that of Quézel & Santa (1962, 1963), however, when the taxon is indicated by the mere mention of "endemic" (noted End.), it is considered an algerian endemic according to Véla & Benhouhou (2007). The mention of rarity in the Quézel & Santa (1962, 1963) flora is by a single index. This index has four levels ranging from "extremely rare" (RRR) to "quite rare" (AR) (Vela & Benhouhou 2007; Medjahdi 2010). Only three levels of rarity are retained in our work. They correspond to the relative scarcity of our taxa: AR - quite rare; R - rare, and RR - very rare. Regarding biological types used in this study is that of Raunkiaer (Emberger 1966).

For the numerical analysis of the vegetation two techniques were used. First, the similarity index where several options exist and to assess the floristic similarity of two lists of species or two sites or statements of study (Kouassi et al 2010). We chose the Sørensen-Dice index. It uses binary data of species (Gower 1971 in Johnston 1976; Hill & Gauch 1980; Duarte et al 1999; Dalirsefat et al 2009; Faye 2010; Kallio et al 2011; Marcon 2013; Hammer 2015). Semi-quantitative coefficient of abundance-dominance was transformed into qualitative presence-absence coefficient. Comparing the samples are done in the presence-absence (coded 0 or 1), without species weigh, according to abundance-dominance (Gillet 2000).

Secondary, and for a deeper analysis of our results, we also used the Detrended Correspondence Analysis (DCA) because not prone to arch effect and data compression (Hill & Gauch 1980; Minchin 1987; Bouxin 2014) samples to be unevenly spaced along the axis 1. DCA ordinations perform better with simulated data than do correspondence analysis (CA) and reciprocal averaging (RA) ordinations (Holland 2008). This technique works well on vegetation data (Hill & Gauch 1980). In the DCA graph, environments where plant composition or floristic samples, translate the same environmental conditions (Khaznadar et al 2009). These techniques used (Similarity index and DCA) were calculated through the PAST free program (Paleontological Statistics) Version 3.05 (1999-2015).

Results and Discussion. A total of 79 samples were thus made during the period mentioned above. From this, the samples are as follows:

- the banks of M'cif wadi contains 42 samples with 21 samples/bank;
- the south of the Chott totals 37 samples.

Botany and chorology

Taxonomic overview. The qualitative floristic analysis (family, genus and species) is made from the floristic inventory list. We obtained 116 species, distributed in 85 genera and 29 botanical families (Table 1). The Magnoliopsida, with 27 families and 68 genera representing 93.10% while the Liliopsida present only two families with 17 genera and representing 6.90% of the total flora. The six most important families are almost two-thirds of the taxa present is 65.52% of the total flora. These families are: Gramineae with 19 species, representing alone 16.38% of the inventoried flora; the other families are Compositae (17 species), Fabaceae (14 species), Chenopodiaceae (12 species), Brassicaceae (8 species) and Caryophyllaceae (6 species), containing respectively 14.65%, 12.07%, 10.34%, 6.90% and 5.17% of the species of the flora. Similarly, and in a similar area, Zedam et al (2010) found that the richest families in species were Gramineae and Compositae. The rest of the families (23 families) have each only one, two or three species.

Chorology. Using Quézel & Santa (1962, 1963), Ozenda (1983) and Dobignard & Chatelain (2010, 2011, 2012), the chorological origins of the species in our study area are 36 and they are presented in Table 1.

Table 1

Chorological origin species in the southern part of Chott El Hodna wetland

<i>Chorological origin</i>	<i>Number</i>	<i>Total of species</i>	<i>Percentage rate (%)</i>
Mediterranean	1	23	19.83
Sahara Sindien	1	11	9.48
Endemic North African	1	9	7.76
Mediterranean-Sahara Sindien	1	7	6.03
Cosmopolitan	1	6	5.17
Mediterranean-Iran-Turan	1	5	4.31
endemic Saharan	1	5	4.31
Mediterranean-Sahara	1	4	3.45
Paleo-temperate	1	4	3.45
Eurasian	1	4	3.45
Sahara	1	3	2.59
endemic Algerian	1	3	2.59
The 24 remaining sources	24	32	27.58
Total	36	116	100

The most important chorological origin (12 of 36) in our study area contained about three quarters (72.42%) of total taxa. The Mediterranean element has 19.83% of the plants identified who demonstrates the membership of this biotope at the Mediterranean region (Kaabeche 1990). In our investigation, despite the presence of other chronological origins and the dominance of the Mediterranean vegetation, Kaabeche (1995, 1996, 1998) denotes the biogeographical situation rather peculiar of this area between the Mediterranean region in the north and the Sahara-Arabian region in the south. The least chronological origins of species (32 species) are usually only singleton (those represented by a single individual) which seems reasonable (Magurran 2004, 2005).

Endemism and rarity. Referring to the new flora of Algeria and the southern desert regions of Quézel & Santa (1962 & 1963) and the Flora of Sahara of Ozenda (1983), the vegetation of our study area contains 20 endemic taxa (17.24% of the total species identified). The existence of 08 endemic and rare species (Table 2) shows the ecological value of important floristic regions (Fennane 2004). This endemic flora has the following biogeographical origins: North African: 9 taxa with 1 taxon AR, 1 taxon R and 2 taxa RR; Saharan: 5 taxa with 1 taxon AR and 1 taxon R; Algerian: 3 taxa with 1 taxon AR; Algerian-Tunisian: 2 taxa with 1 taxon R; Algerian-Moroccan: 1 taxon.

Table 2

Species endemism and rarity according to the botanical families in the southern part of Chott El Hodna wetland

<i>Species</i>	<i>Botanical families</i>	<i>Chorological origin (endemism)</i>	<i>Rarity</i>
<i>Astragalus armatus ssp tragacanthoides</i>	Fabaceae	North African	RR
<i>Astragalus gombo</i>	Fabaceae	North African	
<i>Melilotus macrocarpa</i>	Fabaceae	North African	RR
<i>Hedysarum carnosum</i>	Fabaceae	Algerian-Tunisian	R
<i>Zygophyllum cornutum</i>	Zygophyllaceae	Algerian-Tunisian	
<i>Lycium arabicum</i>	Solanaceae	Saharan	
<i>Cistanche violacea</i>	Orobanchaceae	North African	AR
<i>Anthemis monilicostata ssp stiparum</i>	Asteraceae	Algerian-Moroccan	
<i>Anacyclus cyrtolepidioides</i>	Asteraceae	North African	
<i>Enarthrocarpus clavatus</i>	Brassicaceae	North African	
<i>Ammosperma cinereum</i>	Brassicaceae	Saharan	AR
<i>Thymelea microphylla</i>	Thymeleaceae	North African	
<i>Limonium cymuliferum</i>	Plumbaginaceae	Algerian	AR
<i>Limonium pruinosum</i>	Plumbaginaceae	Saharan	R
<i>Limoniastrum guyonianum</i>	Plumbaginaceae	North African	R
<i>Frankenia thymifolia</i>	Frankeniaceae	North African	
<i>Silene arenarioides</i>	Caryophyllaceae	Algerian	
<i>Herniaria mauritanica</i>	Caryophyllaceae	Algerian	
<i>Euphorbia guyoniana</i>	Euphorbiaceae	Saharan	
<i>Scrophularia saharae</i>	Scrophulariaceae	Saharan	

AR - quite rare; R - rare; RR - very rare.

Biological types. The biological types were determined as they appear in the vegetation studied on land (Emberger 1966). In some cases, the biological type is not detectable and it took complement through the exploitation of other flora and references such as Dobignard & Chatelain (2010, 2011, 2012). All of the identified species were grouped by biological type as follows: therophyte (70 species), chamaephyte (21 species), hemicryptophyte (13 species), phanerophyte (7 species) and geophyte (5 species) (Figure 2).

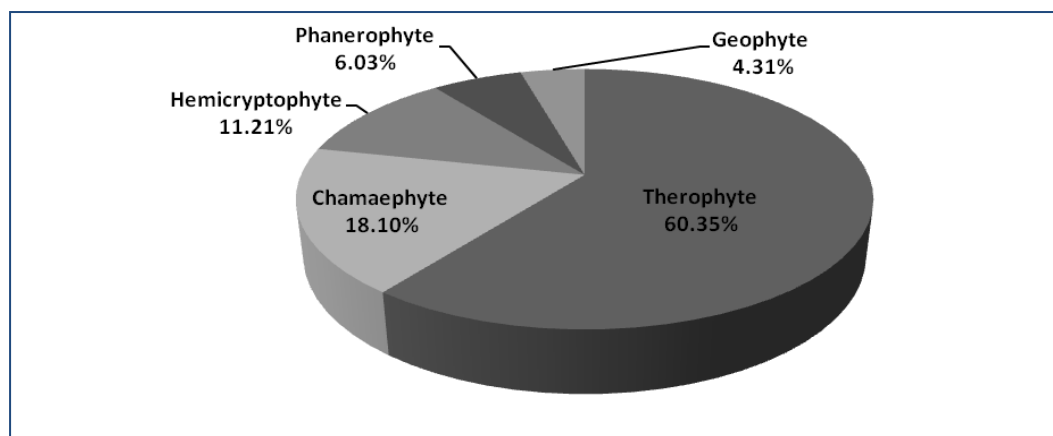


Figure 2. Distribution of biological types in the study area.

The most dominant life form is therophyte. It represents 60.35% of all species. The second important is chamaephyte with up to 18.10% of total plants. The hemicryptophyte, phanerophyte and geophyte have respectively: 11.21%, 6.03% and 4.31% of the total. This fact reflects a characteristic of arid habitats where water and heat stress, omnipresent in our study area, are factors that control the growth and geographical distribution of plants (Le Houerou 1989).

Contrary to what was reported by Killian (1953), where annual species are poorly represented in the flora around Chott El Hodna, in the steppe formations, the therophyte predominate over other life forms (Kaabeche 1990, 1995; Khaznadar et al 2009). The abundance of therophyte can be explained by the strong presence of seasonal habitats for the development of rapid annual germination and growth (Hammada et al 2004). Hammada et al (2004) and Hammada (2007) report that the dominant terrestrial flora found in Morocco's wetlands are annuals (therophytes). This biological type has a short development cycle, easily and quickly colonizes many environments. The other types can not move anywhere because of their requirements.

The plant richness is due to the geomorphological diversity of the region and has resulted in a wide range of local climates (Médail & Myers 2004).

Numerical analysis of vegetation

Similarity index. Similarity indices were calculated between all the pairs of samples. One useful property of a similarity index is that it increases linearly from some fixed minimum to some fixed, finite maximum (Wolda 1981). High values are interpreted as reflecting low beta diversity: high similarity (Koleff et al 2003).

Taking into account the Sørensen's similarity between samples and according to Figure 3, the cluster analysis takes into account the variation of species and thus clearly separates the different microhabitats or study sites (Jenny et al 1990).

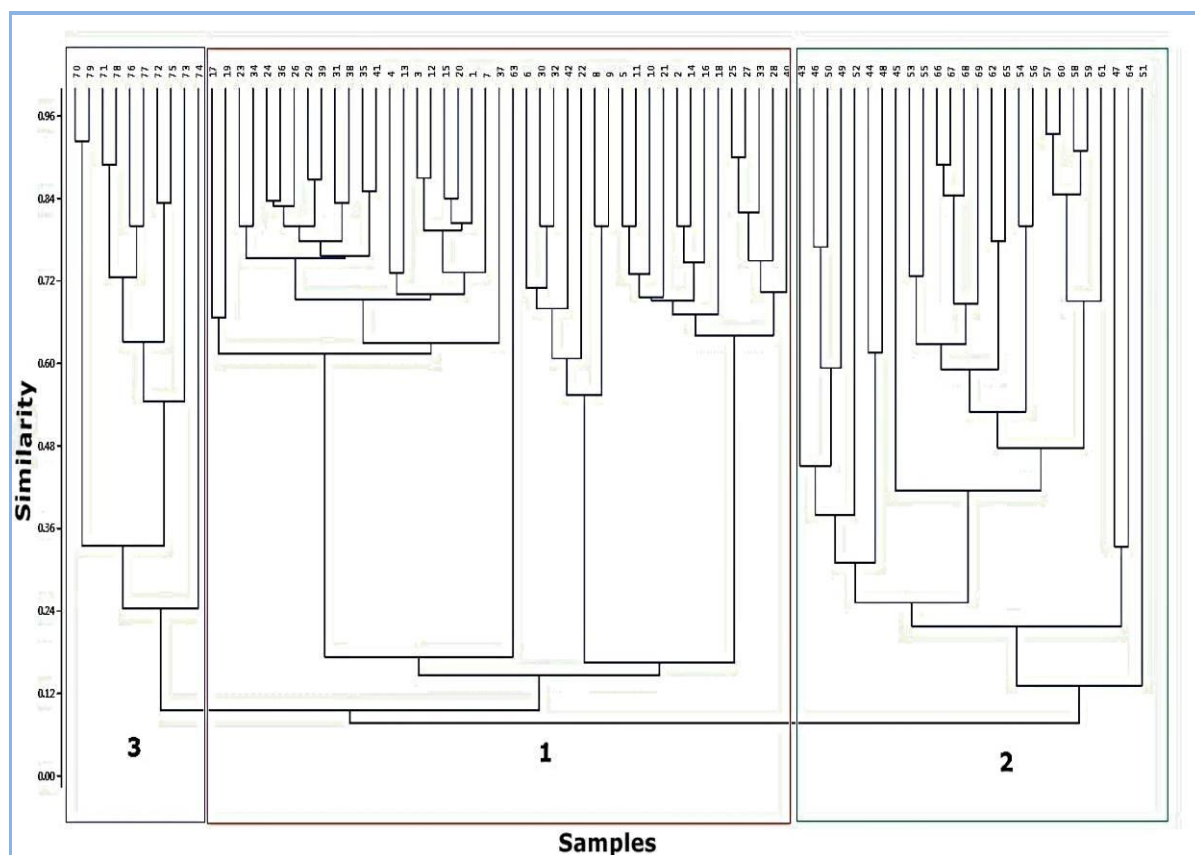


Figure 3. Sørensen's similarity index of samples.

Taking into account the values of the similarity in the similarity matrix between sample pairs, they are fairly consistent throughout. They vary as follows: for the group of samples 01 to 42 - 0.87 (3; 12), 0.83 (1; 3), 0.81 (3; 15), 0.80 (5; 11); for the group of samples from 43 to 69 - 0.90 (66; 67), 0.83 (57; 60) and (67; 68) and 0.76 (53; 55); and in the end for samples group 70 to 79 - 0.80 (70; 79), 0.74 (72; 75) and (76; 78) and 0.69 (71; 78). On the other hand the graph similarity of samples (Figure 3) shows three major groups: a first group (1) encompassing samples 01 to 42 in the center and it concerns the samples conducted in the wadi banks. A second group (2) is marked by samples from 43 to 69 and is related to the area of fine texture and apparent surface salinity. A final set (3) is highly individualized samples 70 to 79 and covers performed on sandy soil.

The similarity showed the existence of soils difference (salinity) between stations and led to a sharp difference of vegetation. The samples group subservient to the relatively saline soil and fine texture are characterized by relatively salt-tolerant species: *Halocnemum strobilaceum* (Pall.) M. B., *Suaeda fruticosa* L. and *Frankenia pulverulenta* L. (Quézel & Santa 1962, 1963; Ozenda 1983). Bouabdallah (1992) and Géhu et al (1993) report that *H. strobilaceum* belongs to halophilous plant community.

Also Kaabeche et al (1995) report that *H. strobilaceum* and *F. pulverulenta* are halophilous plants. The psamophilous group species on sandy soil represented by *Aristida pungens* Desf., *Retama retam* Webb and *Cutandia dichotoma* (Forsk) Trab are encountered in sandy arid areas (Djebaili 1984). Similarly Ward et al (1993) report that *R. retam* is a typical plant found in sandy habitats of the Negev Desert in the Middle East. The group records of the wadi banks encompasses a wide variety of species but not characteristics of the two firsts groups. It is an environment drained by unsalted water. This is an area of vegetation which belongs to an anthropized area (area pastured and plots cultivated). Among the species found in this site: *Hordeum murinum* L., *Lolium multiflorum* Lam. and *Anagallis arvensis* L. The presence of these plants indicates disturbed environments.

Detrended correspondence analysis (DCA). The multivariate analysis techniques can transform a table "samples/species" data to the gradient search (Bouxin 2014). The bundling of records based on the presence/absence leaves us visualizes groups based on species composition and the factors responsible for this distribution. According to Figure 4(a), the main gradient in samplings as revealed by the axis 1 in DCA ordination spanned of three groups situated near to themselves. A first group (A) encompassing samples 43 to 69 in the right of the axis and it is related to the area of fine texture and apparent surface salinity. A second group (B) in the center of the axis is marked by the samples 1 to 42 conducted in the wadi banks and in the end a final set (C) individualized samples 70 to 79 and covers performed on sandy soil which are localised at the left of the axis. This gradient means that the axis shows a really evolution of fine texture with salinity area which is opposed a sandy area with less salinity. The gradient revealed by the axis 2 in DCA graph, mean an evolution down to up of soil moisture. The Figure 4(b) reveals the vegetation characterised by species composition such as psamophilous plants like: *Neurada procumbens* L., *Cutandia dichotoma* (Forsk) Trab and *Bassia muricata* (L.) Asch in the left of the axis. Halophilous plants in the right of the axis such as: *Limonium guyonianum* Dur., *Salicornia arabica* L. and *H. strobilaceum*. Between these two species composition there is many species belonging to an anthropized area : *Polygonum aviculare* L., *Cynodon dactylon* (L.) and *Malva sylvestris* L. Agricultural activities generate a significant decline in biodiversity (Daget & Poissonet 1997) and a trivialization of the flora of the need to conserve species through management of the most sensitive natural environments (Verlaque et al 2001).

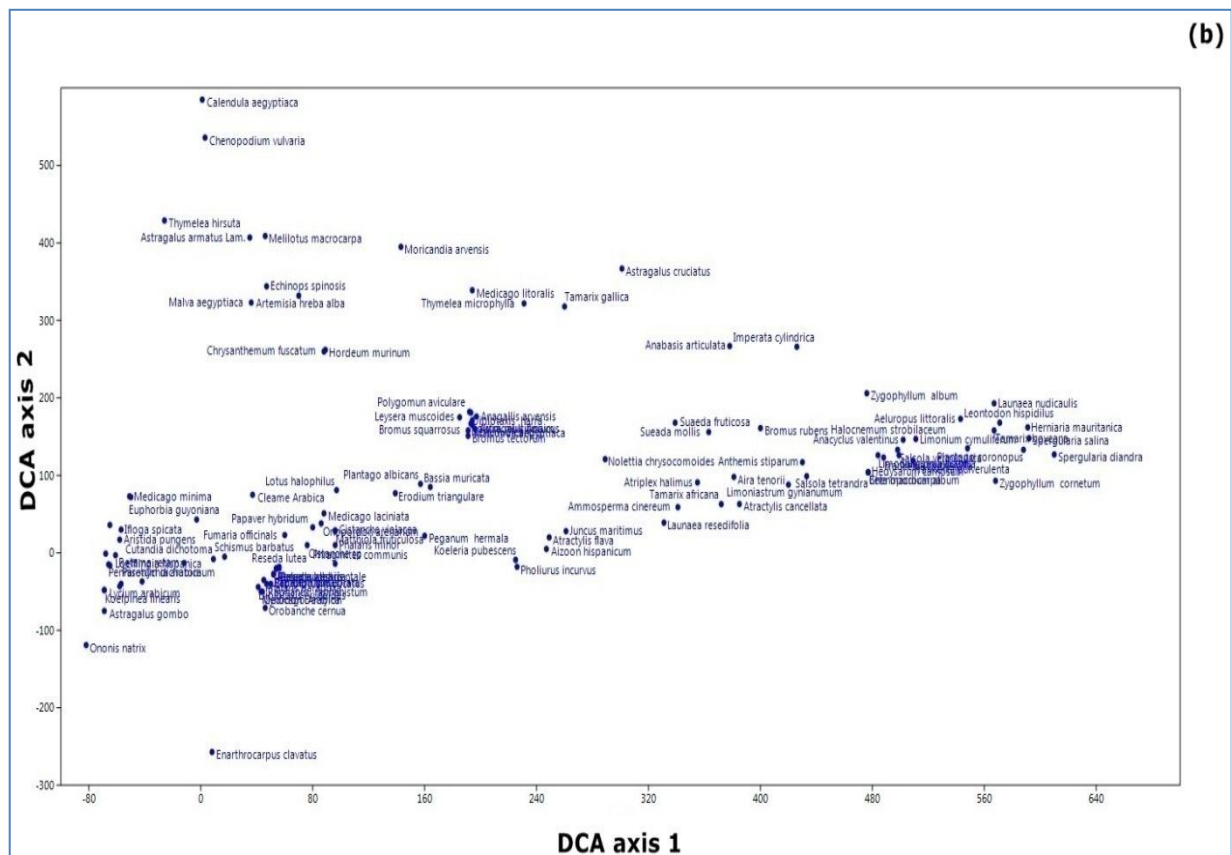
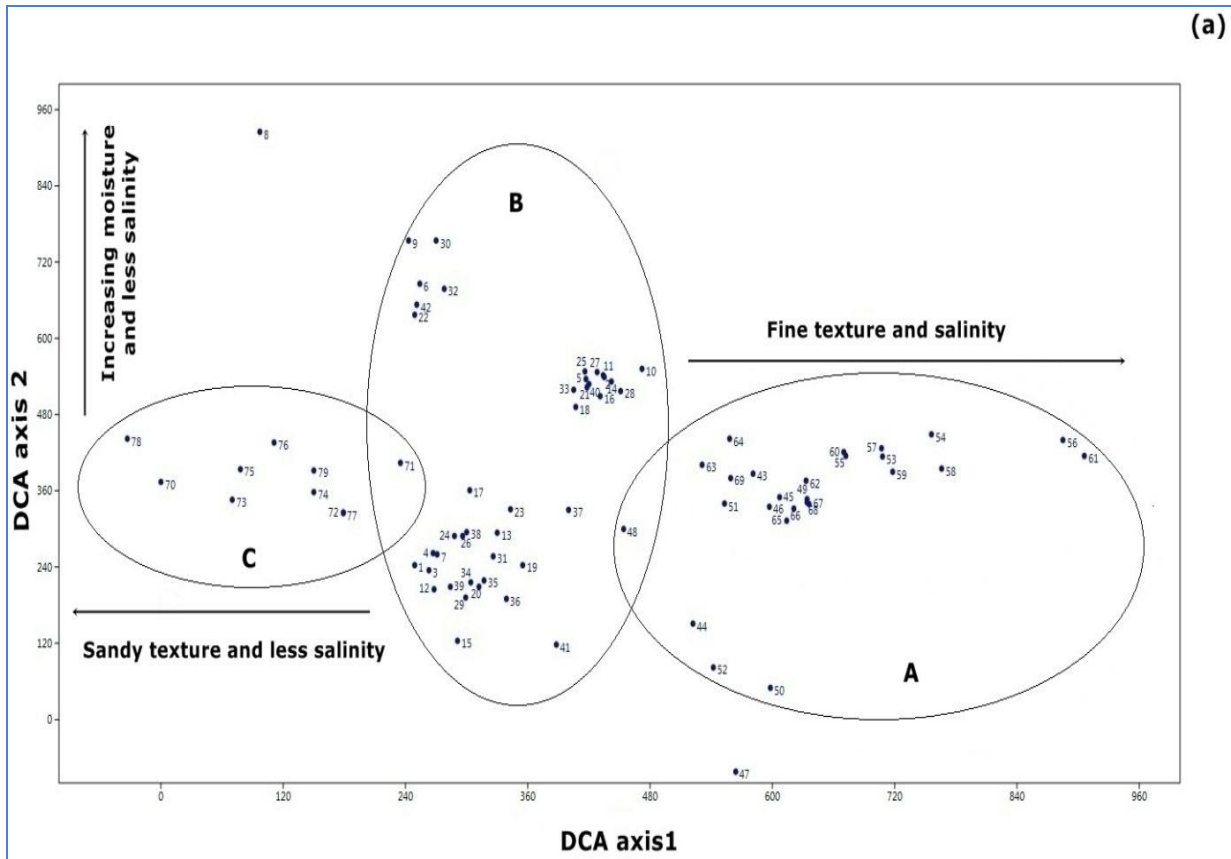


Figure 4. DCA ordination of the 79 samples and species in 1 and 2 axis. a. Site affiliation of samples. b. Positioning of the 116 species found in the samples.

Conclusions. The Mediterranean region, including our study area, is one of the world's major centers of plant diversity. The geographical position of Algeria between the Mediterranean in the north and the Sahel in the south has a host of wetlands of international importance under Ramsar Convention which Chott El Hodna is a part. It is an athalassic salt lake. It is formed by a central water area devoid of vegetation due to high salt concentrations and surrounding by plants. The vascular flora of the southern part of this wetland is a part of the steppe vegetation of the Hodna.

The inventory and analysis of this type of flora in this environment is essential to know the overall composition of existing taxa, plant diversity, biogeography and ecology of the species. A total of 79 samples were thus made during spring seasons in the period 2009-2013. From this, the samples are 42 in the banks of M'cif wadi and 37 in the south of the Chott. A total of 116 species were found. The qualitative floristic analysis gives 85 genera and 29 botanical families. The six most important families of the taxa have 65.52% of the total flora. They are Gramineae, Compositae, Fabaceae, Chenopodiaceae, Brassicaceae and Caryophyllaceae.

Biogeographically, our study area is situated between the Mediterranean region in the north and the Sahara-Arabian region in the south. The most important chorological origin is the Mediterranean element. This result demonstrates the membership of this biotope at the Mediterranean region. There are 20 endemic taxa whose have revealed the existence of 08 endemic and rare species. The most dominant biological type is the therophyte compared to other types. This fact reflects the characteristics of arid habitats where water and heat stress are factors that control the growth and the geographical distribution of plants.

The numerical analysis of vegetation by using the Sørensen's similarity index and the Detrended Correspondence Analysis (DCA) resulted in the individualization of three major groups of samples. A first group encompassing samples and it concerns the samples conducted in the wadi banks which contains vegetation belongs to an anthropized area (area pastured and plots cultivated). A second group is marked by samples related to the area of fine texture and apparent surface salinity where salt-tolerant species are. A final set is highly individualized covers performed on sandy soil characterized by psamophilous species. The vegetation appeared much adapted to the environment that reflect different environmental conditions. The axis 1 in DCA graph means a gradient that a really evolution of fine texture with salinity area which opposed a sandy area with no much salinity. The gradient revealed by the axis 2 in DCA graph, mean an evolution down to up of soil moisture. The preservation of this habitat and flora must register in emergency concerns. Our study area is vulnerable especially against destructive human actions (plowing, burning, overgrazing and uprooting) where the work of backup and preservation of this area should be maintained because of its membership in the wetland of Chott el Hodna.

Acknowledgements. We are very much grateful to Dr. Fateh Mimeche and Djamel Sarri from University of M'Sila for their help.

References

- Ayad N., Djennane A., Ayache A., Hellal B., 2013 [Contribution to the study of the implantation of *Artemisia herba-alba* Asso. in the steppe of south Tlemcen]. Rev. Ecologie-Environnement 9 : 1-5. [In French]
- Bouabdallah E., 1992 [The steppe vegetation on saline soils high plains south of Algiers. Composition, structure and Production]. PhD thesis. South Paris - Orsay University, p.206. [In French]
- Bouxin G., 2014 [Statistical analysis of vegetation data. Chapter 5. The technical factor analysis of vegetation data]. 36p (<http://www.guy-bouxin.e-monsite.com/>) [In French]
- Daget Ph., et Poissonet J., 1997 [Biodiversity and pastoral vegetation]. Revue Elev. Méd. vét. Pays trop., 50(2): 141-144[In French]

- Dalirsefat S.B., Meyer A. S., Mirhoseini S. Z., 2009 Comparison of Similarity Coefficients used for Cluster Analysis with Amplified Fragment Length Polymorphism Markers in the Silkworm, *Bombyx mori*. J Insect Sci 9:1-8.
- Davis T.J., 1996 [The Manual of the Ramsar Convention]. TJ Davis Ed. - RAMSAR Convention Office, Switzerland, p.185. [In French]
- Djebaili S., 1978 [Phytosociological and ecological research on steppe vegetation in high plains and Saharan Atlas in Algeria]. PhD. thesis. Sc. Tech. Languedoc, Montpellier University, p. 229 [In French]
- Djebaili S., 1984 [Algerian Steppe, Phytosociology and ecology]. O. P. U ed. Algiers. p.177 [In French]
- Dobignard A., Chatelain C., 2010 [Synonymous and bibliographic index of the flora of North Africa: Pteridophyta, Gymnospermae & Monocotyledonae]. Vol. 1. C.J.B.G, Genève, p.455. [In French]
- Dobignard A., Chatelain C., 2011 [Synonymous and bibliographic index of the flora of North Africa: Dicotyledonea: Acanthaceae – Asteraceae]. Vol. 2. C.J.B.G, Genève, p.428. [In French]
- Dobignard A., Chatelain C., 2012 [Synonymous and bibliographic index of the flora of North Africa: Dicotyledonea: Fabaceae – Nymphaeaceae]. Vol. 4. C.J.B.G, Genève, p.431. [In French]
- DGF, 2002 Atlas of the 26 [Algerian wetlands of international importance]. Forests Direction, Algeria. Ed. Diwan, Alger, p.89. [In French]
- Duarte J. M., Dos Santos J. B., Melo L.C., 1999 Comparaison of similarity coefficients based on rapid markers in the common bean. Genet Mol Biol 3: 427-432.
- Emberger L., 1966 [Reflections on Raunkiaer biological spectrum]. B Soc Bot Fr 113 (2): 147-156. [In French]
- Faye E., 2010 [Partial diagnosis of the flora and vegetation of the Niayes and groundnut basin in Senegal: application floristry methods phytosociological, ethnobotany and mapping]. PhD thesis of Agronomic Sciences ques and Biological Engineering - Interfaculty School of Bioengineers - Free University of Brussels, p.253. [In French]
- Fennane M., 2004 [Proposals important areas for plants in Morocco (ZIP Morocco)]. National Workshop "Important Plants Areas in Morocco", Rabat, October, 11-12, 2004, p.25. [In French]
- Frontier S., 1983 [Ecology sampling strategy]. ed. Masson-Paris. 490 p. [In French]
- Géhu J.M., Kaabeche M., Gharzouli R., 1993 [A remarkable phytocoenotic toposequence edge of Chott El Hodna (Algeria)]. Fragm. Flor. Geobot 2(2):513-520. [In French]
- Gillet F., 2000 [Phytosociology integrated synusial - Methodological Guide Neuchâtel University (France) - Institute of Botany - Documents of Plant Ecology Laboratory, Document 1], 4th édition, p.68. [In French]
- Guinochet M., 1973 [Phytosociology]. Paris, Ed. Masson & Cie, p.296. [In French]
- Hadjab M., 1998 [Development and protection of natural areas in the central basin of Hodna (Algeria)]. - Provence University (France), p.237 + Appendices. [In French]
- Hamel T., Seridi R., de Bélair G., Slimani A., Babali B., 2013 [Rare and endemic flora vascular of Edough Peninsula (Algerian Northeast)]. Rev. Sci. Technol., Synthèse 26: 65-74. [In French]
- Hammada S., Dakki M., Ibn Tattou M., Ouyahya A., Fennane M., 2004 [Analysis of plant biodiversity of wetlands in Morocco. Rare flora, threatened and halophilic]. Acta Bot Malacit 29 : 43-66. [In French]
- Hammada S., 2007 [Studies on wetland vegetation of Morocco - Catalogue and Analysis of the floristic biodiversity and identification of the main groupings Plants]. PhD. Thesis, Mohammed V Univ., Rabat, p.199. [In French]
- Hammer O., 2015 PAST : PAleontological STatistics. Reference manual. Version 3.05 (1999-2015) Natural History Museum - University of Oslo, p.224.
- Hill M.O., Gauch H.G.Jr., 1980 Detrended Correspondence Analysis: An improved Ordination Technique. Vegetatio 42: 47-58.
- Holland S. M., 2008 Detrended Correspondence Analysis (DCA). DCA Tutorial - Department of Geology, University of Georgia, Athens, p.9.

- Jenny M., Smettan U., Facklam-Moniak M., 1990 Soil-vegetation relationship at several arid microsites in the Wadi Araba (Jordan). *Vegetatio* 89: 149-164.
- Johnston J. W. 1976. Similarity Indices : What Do They Measure? Battelle - Pacific Northwest Laboratories Richland, Washington - USA, p.109 + Appendix.
- Kaabeche M., 1990 [Plant communities in the Bou Saada region (Algeria). Synthesis on the Maghreb steppe vegetation.] South Paris - Orsay University, p.132 [In French]
- Kaabeche M., 1995 [Flora and vegetation in the Chott El Hodna (Algeria)]. *Phytosociological documents. Camerino* 15: 394-402. [In French]
- Kaabeche M., 1996 [The steppe vegetation of the Maghreb (Algeria, Morocco, Tunisia). *Phytosociological synthesis by applying numerical analysis techniques*]. *Phytosociological documents. Camerino*. pp 16:45-58. [In French]
- Kaabeche M., 1998 [The drought-tolerant lawns therophytes Maghreb (Algeria, Morocco, Tunisia). *Phytosociological synthesis by applying numerical analysis techniques*]. *Phytosociological documents. Camerino* 18:61-72. [In French]
- Kaabeche M., Gharzouli R., Géhu J.M., 1995 [Phytosociological comments on the the Tell and the High Plains of Setif (Algeria)]. *Phytosociological documents. Camerino* 15:117-125. [In French]
- Kallio A. P., Kai F. M., Mannila H., 2011. Correlations and co-occurrences of taxa: the role of temporal, geographic, and taxonomic restrictions. *Palaeontol. Electron* 1:1-14.
- Khaznadar M., Vogiatzakis I.N., Griffiths G.H., 2009 Land degradation and vegetation distribution in Chott El Beida wetland, Algeria. *J Arid Environ* 73: 369-377.
- Killian C., 1953 [The vegetation around Chott Hodna, indicative of cropping possibilities and soil environment]. *Annals of Agricultural and Research Institute of Agricultural Services and Experimentation of Algeria. Tome 7, Fasc.5, p.80*. [In French]
- Koleff P., Gaston K., J., Lennon J., J., 2003 Measuring beta diversity for presence-absence data. *J Anim Ecol* 72: 367-382.
- Kouassi A. F., Adou Y. C. Y., Ipou I. J., Amanzi K. K., 2010 [Floristic diversity of coastal areas grazed in Ivory Coast : Case of the barrier beach of Port-Bouët-Grand-Bassam (Abidjan)]. *Sciences & Nature Vol.7, 1: 69-86*. [In French]
- Lacoste A., Salanon R., 2005 [Biogeography and ecology elements]. Paris : A. Colin coll. (2nd édition), p.300. [In French]
- Le Houerou H., N., 1989 [Ecoclimatic classification of Arid areas in North Africa]. *Ecologia Mediterranea* 15:95-144. [In French]
- Le Houerou H., N., 1995 [Biogeographic considerations on the arid steppes of northern Africa]. *Sécheresse* 6:167-182. [In French]
- Le Houerou H., N., 2009 *Bioclimatology and biogeography of Africa*. Ed. Springer-Verlag Berlin Heidelberg, p.241.
- Magurran A.E., 1988. *Ecological diversity and its measurement*. Princeton University Press - New Jersey. ISBN 9780691084916.
- Magurran, A.E. 2004 *Measuring Biological Diversity*. Blackwell Science Ltd, Blackwell Publishing Company, 256 pp.
- Magurran, A. E., 2005 Species abundance distributions: pattern or process? *Funct Ecol* 19: 177-181.
- Marcon E., 2013 [Biodiversity measures]. *Guyana ecology forests, Mixed Research Unit : CNRS, INRA, Agro Paris Tech & Cirad, p.79*. [In French]
- Medjahdi B., 2010 [Response of vegetation to disturbance of Oran coast: Case of Trara Mountains (North-West of Algeria)]. PhD thesis in Forestry, Aboubekr Belkaid Univ. (Tlemcen, Algeria), 266 pp. + appendices [In French]
- Mimoune S., 1995 [Management of saline soils and desertification in endorheic basin of Algeria (southern Chott El Hodna)]. PhD Thesis, Aix-Marseille Univ. I, p.204. [In French]
- Minchin P. R., 1987 An evaluation of the relative robustness of techniques for ecological ordination. *Vegetatio* 69: 89 - 107.
- Médail F., Quézel P., 1999 Biodiversity Hotspots in the Mediterranean Basin: Setting Global Conservation Priorities. *Conserv Biol* 13: 1510-1513.

- Médail F. Myers N., 2004 Mediterranean Basin. In : Hotspots revisited: Earth's biologically richest and most endangered terrestrial ecoregions. Mittermeier R.A., Robles Gil P., Hoffmann M., Pilgrim J., Brooks T., Mittermeier C.G., Lamoreux J. & da Fonseca G. A.B. CEMEX (Monterrey), Conservation International (Washington) & Agrupación Sierra Madre (Mexico), pp. 144-147.
- Myers N., 1990 The Biodiversity Challenge: Expanded hot-spots analysis. *The Environmentalist* 4: 243-256.
- Myers N., Mittermeier R. A, Mittermeier C. G., da Fonseca G. A. B., Kent J. 2000 Biodiversity hotspots for conservation priorities. *Nature* 403: 853-858.
- Ozenda P., 1982 [The Plants in the biosphere]. Ed. Doin, Paris, p.427. [In French]
- Ozenda P., 1983 [Flora of Sahara]. 2^{ème} Ed. CNRS, Paris, p.622. [In French]
- Quézel P., Santa S., 1962 [New flora of Algeria and southerly desert regions]. Paris: CNRS. Volume 1, pp 1-565. [In French]
- Quézel P., Santa S., 1963 [New flora of Algeria and southerly desert regions]. Paris: CNRS. Volume 2, pp 571-1091. [In French]
- Quézel P., 1991 [Structure of vegetation and flora in North Africa, their impact on conservation issues]. Actes Editions. p. 19-32. [In French]
- Vela E., Benhouhou S., 2007 [Evaluation of a new hotspot of plant biodiversity in the Mediterranean Basin (North Africa)]. *C. R. Biologies*, 330: 589-605. [In French]
- Verlaque R., Médail F., Aboucaya A., 2001 [Predictive value of biological types for the conservation of Mediterranean flora]. *Life Sciences* 324:1157-1165. [In French]
- Ward D., Olsvig-Whittaker L., Lawes M., 1993 Vegetation-environment relationships in a Negev Desert erosion cirque. *J Veg Sci* 4: 83-94.
- Wolda H., 1981 Similarity Indices, Sample Size and Diversity. *Oecologia* 50:296-302.
- Zedam A., Atoui A., Rouissat R., 2010 [Vegetation of Oued Mcif (south of Chott El Hodna -M'Sila)]. International Seminar on the Preservation and Development of Steppic Ecosystem (Oral communication), University of M'Sila, March 14 - 16. [In French]

Received: 15 March 2015. Accepted: 02 May 2015. Published online: 06 May 2015.

Authors:

Abdelghani Zedam, Faculty of Science, Department of Agricultural Sciences, University of M'Sila, M'Sila, 28000, Algeria, e-mail: habzedam@gmail.com / zedamg@univ-msila.dz

Mohamed Fenni, Department of Agricultural Sciences, Faculty of Nature Sciences and Life, University Setif1, Setif, 19000, Algeria, e-mail: fennimodz@yahoo.fr

This is an open-access article distributed under the terms of the Creative Commons Attribution License, which permits unrestricted use, distribution and reproduction in any medium, provided the original author and source are credited.

How to cite this article:

Zedam A., Fenni M., 2015 Vascular flora analysis in the Southern part of Chott El Hodna wetland (Algeria). *AES Bioflux* 7(3):357-368.